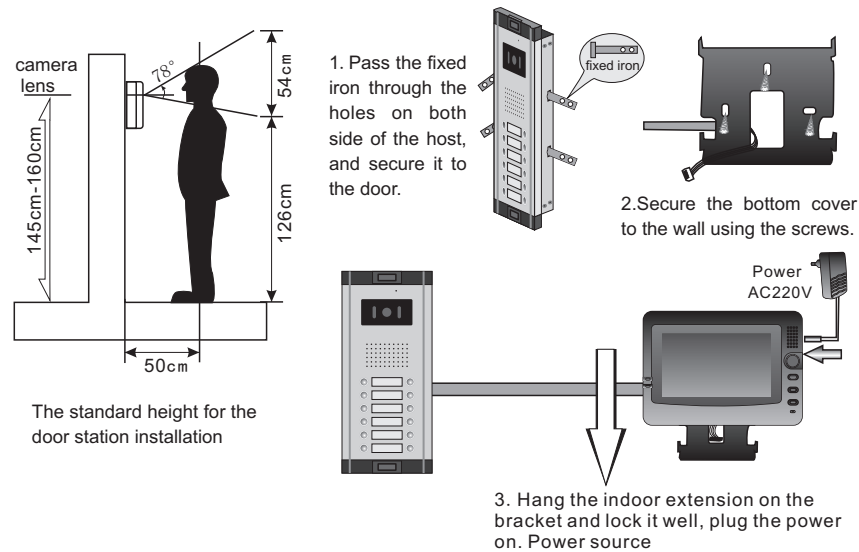


5. Installation instruction

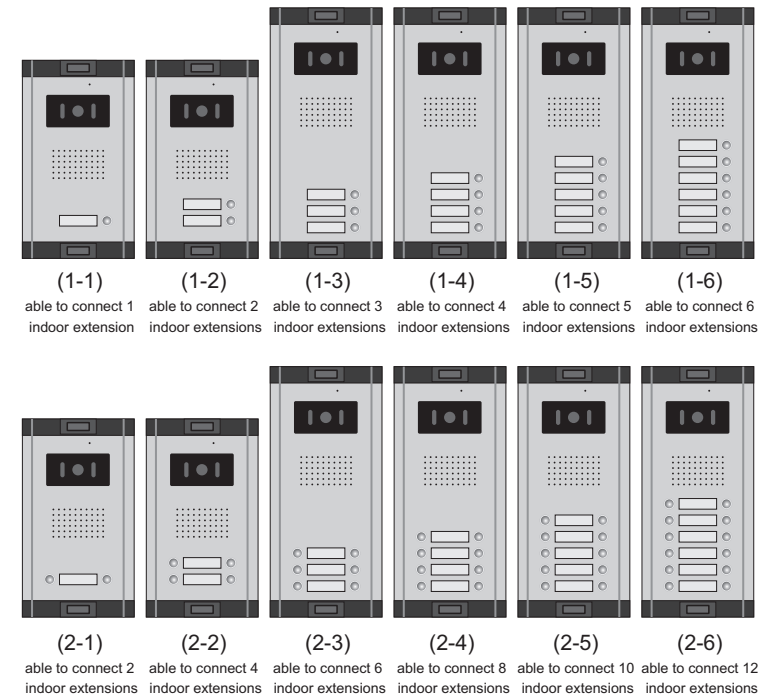


6. Installation warnings

- Use RVV4 core wire to connect outdoor host with indoor extension, while RVV5 core wire to connect indoor extension with the next indoor extension.
 - The cross-sectional area of the wire connecting host and electric should be $\geq 1\text{mm}^2$, and the length should be $\leq 15\text{m}$, or the cross-sectional area of the wire should be enlarged.
 - Install the doorway host to a height with good line of view, the suggested height is 150cm (the height of the camera).
 - The doorway host and indoor host should be installed away from direct sunlight, high temperature, condensing, wet, chemical corrosion and dusty places (standard temperature $0-45^\circ\text{C}$), in case that the inner components are affected with damp and other sundry get into the machine.
 - Do not use chemicals, cleansers and other detergent to clean the surface.
 - Do not install the intercom system in strong magnetic field (such as nearing the non-shielding speaker).
 - Do not install the intercom system in magnetic disturbed terribly field (such as nearing the electric motor).
 - Do not install the intercom system in the place with a noise $> 65\text{Db}$, or the receiver of the indoor extension will be disturbed.
 - Switch off power during operation.
 - After all the wire being connected well, check it repeatedly and plug the power on if no error occurred.
 - When power on and any abnormal situation occurred, power off immediately until you find the trouble and solve it.
 - To keep the stability of the system and make it easy to repair in the future, all the thum of the wire can't put in the tube or anywhere accessible to water, the thum should be soldered and packed well with heat shrinkable tube, and it should be waterproof and damp proof.
 - Non-professionals should not open the cover without authorities.
- If the system is abnormal, power off and check it by parts according to <common mistakes handling>. If the problem hasn't been fund, please contact the dealer or the after sales services department, do not repair it by yourself or change the components in case that it will damage the system.

Keep press type visible doorway host

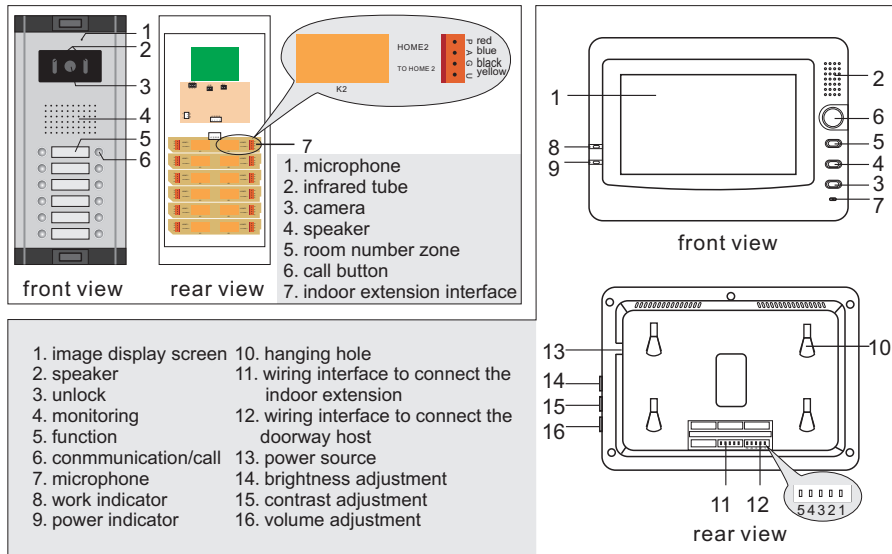
Installation instructions



Thank you for purchasing this product.

Please read the user's manual in detail before using this product, making sure that it is operated properly.

1. The structure of the host and extension



2. Technical parameters

Outdoor extension

| | | |
|---------------------|---------------------------|---------|
| Camera | 1/3CCD | 1/4CMOS |
| definition | 420line | 380line |
| luminance | 0.02LUX | 0.1LUX |
| static current | ≤60mA | |
| unlock current | ≤2000mA | |
| working voltage | DC9~15V | |
| working temperature | -10~60℃ | |
| dimension | 276×122×43mm/216×122×33mm | |

Indoor extension

| | | |
|-------------------|--|---------|
| Display screen | 7" TFT | |
| definition | 800×600 | 480×240 |
| dimension | 229×162×33mm | |
| power source | DC14V 1. 2A | |
| video input | 1VP-P/75 Ω | |
| bell | chord | |
| show time | switch to standby mode after 30 seconds | |
| power consumption | standby≥0.02W, working≥6W | |
| connecting wire | 5 core wire | |

outdoor host 4 core wire connect to extension

| number | color | comments | notes |
|--------|--------|----------|--------------------------|
| 1 | yellow | video | $\phi \geq 0.2\text{mm}$ |
| 2 | black | ground | $\phi \geq 0.2\text{mm}$ |
| 3 | blue | audio | $\phi \geq 0.2\text{mm}$ |
| 4 | red | power | $\phi \geq 0.2\text{mm}$ |

outdoor host 2 core wire electric lock

| number | color | comments | notes |
|--------|-------|----------|--------------------------|
| 1 | red | unlock | $\phi \geq 0.1\text{mm}$ |
| 2 | black | ground | $\phi \geq 0.1\text{mm}$ |

indoor extension 5 core wire

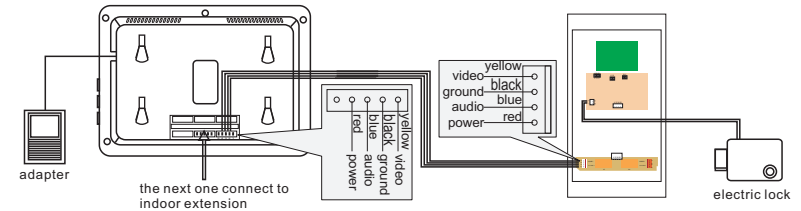
| number | color | comments | notes |
|--------|--------|--------------------------------|---|
| 1 | yellow | video | $\phi \geq 0.2\text{mm}$ |
| 2 | black | ground | $\phi \geq 0.2\text{mm}$ |
| 3 | blue | audio | $\phi \geq 0.2\text{mm}$ |
| 4 | red | power | $\phi \geq 0.2\text{mm}$ |
| 5 | green | internal communication line | used when several extensions connected |

adapter

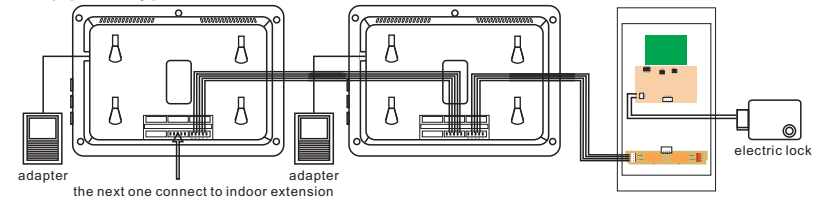
| | | | |
|-----------|------------|------|--------|
| input | AC | 220V | 50Hz |
| output | AC | 14V | 1000mA |
| dimension | 45×80×52mm | | |

3. Wiring diagram

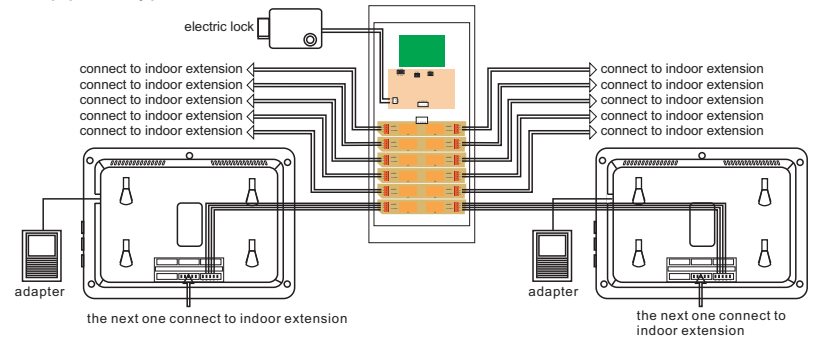
a. keep press type one outdoor host connect to one indoor extension



b. keep press type one outdoor host connect to several indoor extensions



c. keep press type several outdoor host connect to several indoor extensions



4. Function and operating instruction

Operating instruction

1. When the visitor press the “call” button on the doorway host, the ringing will be triggered on indoor extension, and with the image shown on display screen.
2. The resident press “intercom/call” button, the talk process is established.
3. The resident press “unlock” button during talking to open the electric lock.
4. Pressing the “monitoring” button, which can monitor the doorway situation.
5. If one residence installed several extensions, press “communication/call” button to establish intercom with other extensions.

Ringling music selection instruction

1. Press the “monitoring” button and hold it for about 5 seconds, the system switch to music selection situation.
2. when hearing the music, press “function” button to shift the music, each time for shifting one music (there's only 3 music to shift).
3. When a music been selected, press the “monitoring” button to confirm, or it will return automatically and remain the music before selected in 20 seconds.