

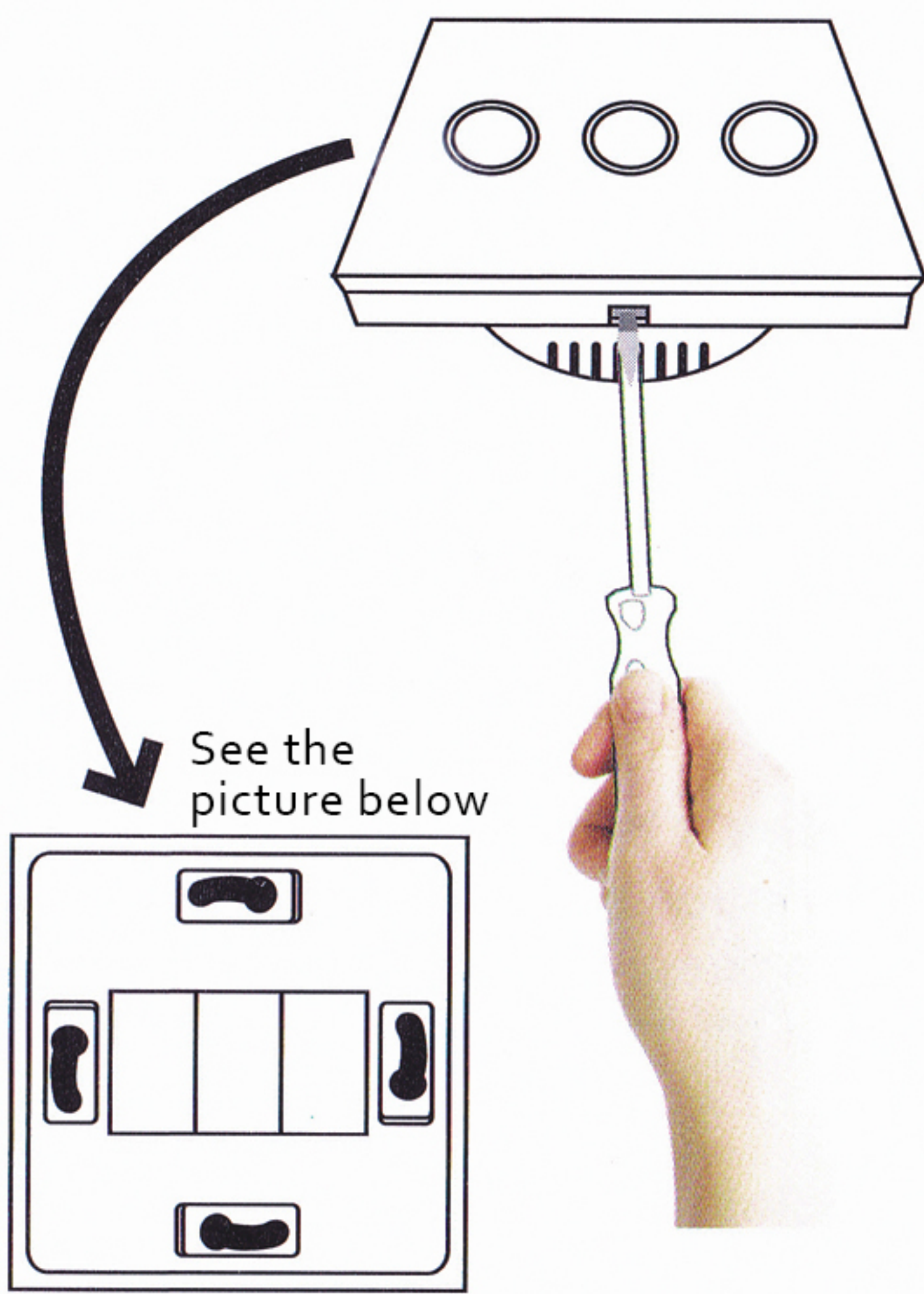
# Smart Touch Switch

## Quick Installation Guide

⚠ Make sure electricity is cut off during the installation

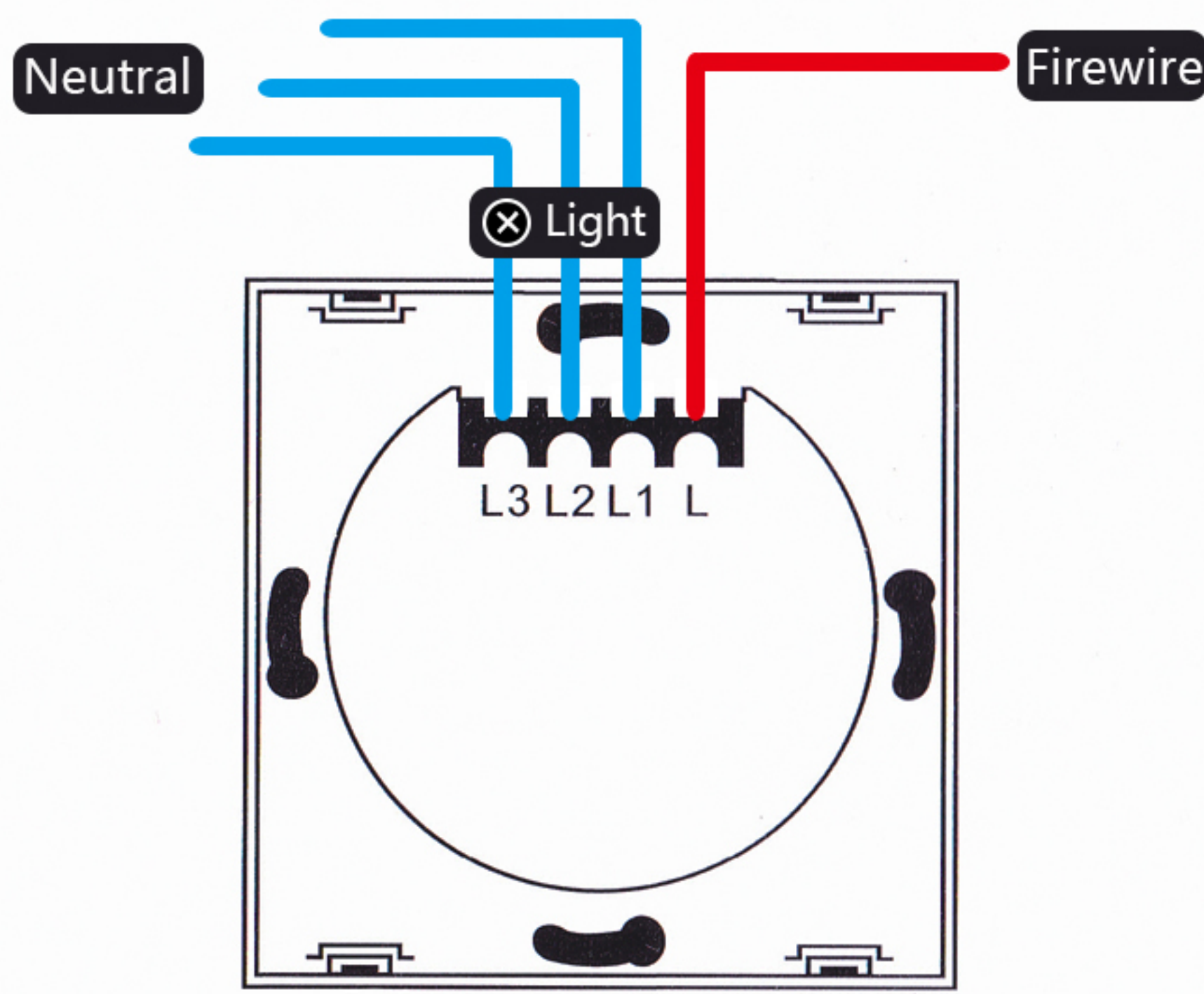
### 1 Installation Wiring Diagram

1. Remove the panel with screwdriver  
(Please don't install with electricity power on)

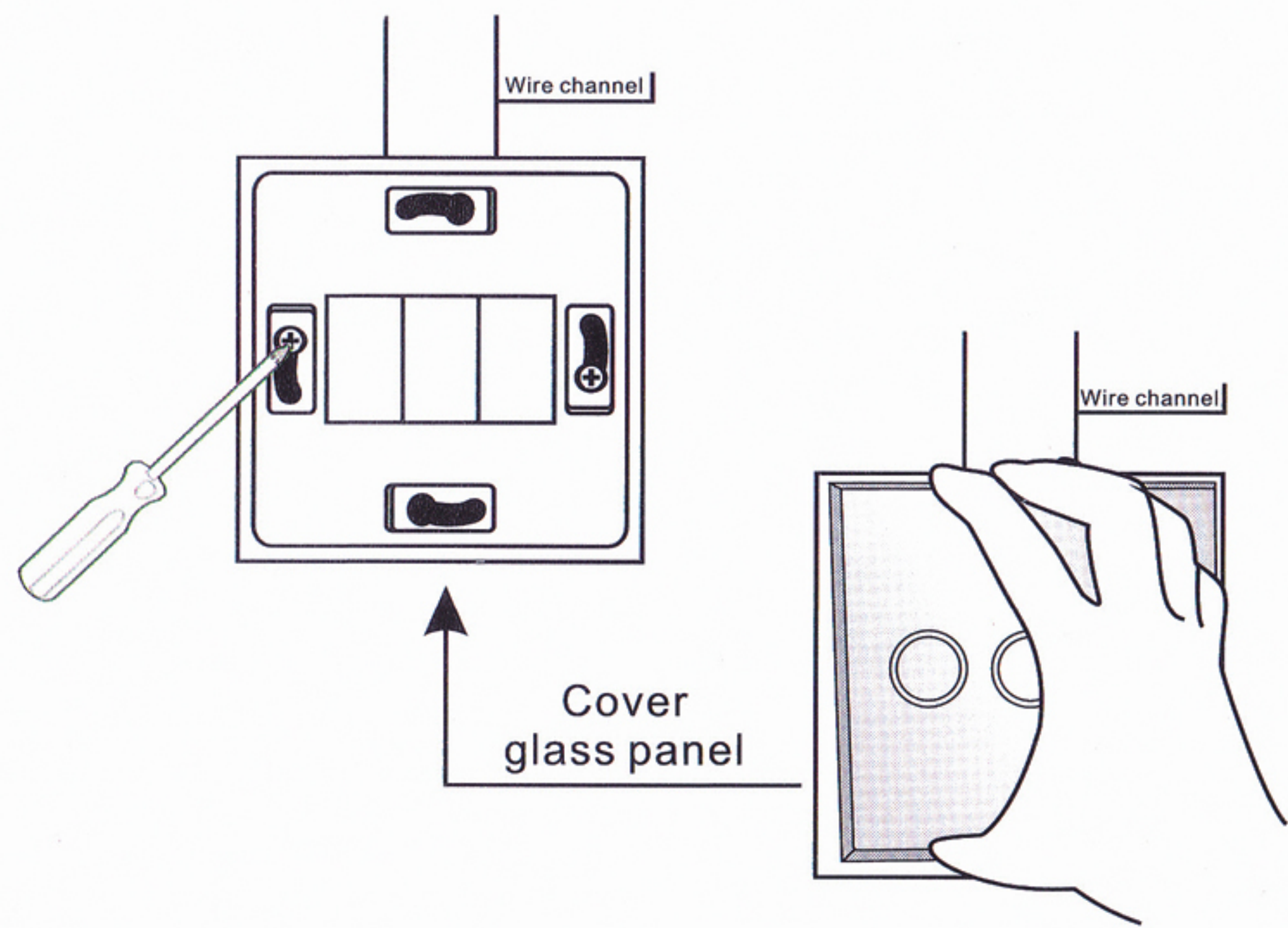


2.Prepare to install wiring  
A. Fire wire connects " L1 " terminal  
B. Lamp wire connects " L1,L2,L3 " terminal

1 Gang connects "L2" terminal  
2 Gang connects "L1,L3" terminal  
3 Gang connects "L1,L2.,L3" terminal



3.Fix the switch onto wall  
A.Put the switch into switch box in the wall  
B.Mount the two side screws  
C.Install the glass panel (install from up above)  
D.Finish installation  
E.Turn on electricity, touch after 10 seconds



### 2 Remote Control Pairing

( suitable for remote switch series )

1.How to use a button to turn it ON & OFF ?  
Press the touch button for few seconds when rings a beep, And then press remote any key, power ON and OFF control can be realized.

2.How to use a button to turn it ON ?  
Press the touch button for few seconds when rings two beep,And then press remote any key, power ON control can be realized.

3.How to use a button to turn it OFF ?  
Press the touch button for few seconds when rings three beep,And then press remote any key, power OFF control can be realized.

4.How to cleanup the code ?  
Press the touch button for few seconds when rings four beeps,The code will be cleared.

### 1 Product Overview

Smart remote touch switch used in single live wire, Simple installation,It can control various load type switch,Such as LED lamps,Incandescent lamp, Fluorescent lamp and Tungsten filament lamp. Touch control &remote control are both available. Moreover smart host controlling is also available, The smart host communicate with smart phone through internet,So smart phone can know the smart touch switch clearly and turn on/off the lights conveniently.

### 2 Product Features

- Industry grade design capacitance touch screen, touch sensitive & quick response. Ultra-low power design, more energy saving, more environmental.
- Ultra clear tempered glass panel, fashion design. you can touch it with wet hand very safe.
- Unique night indicator design, luxury, fashion. Convenient for old people & children.
- Equipped with smart host, it can be controlled through internet, and also the light ON/OFF status can be checked.
- Single live wire installation, compatible with traditional switch installation method. No need to change the original circuit.
- Distinctive style, suitable for apartment, foreign-style house, villa, office building, hotel and etc.

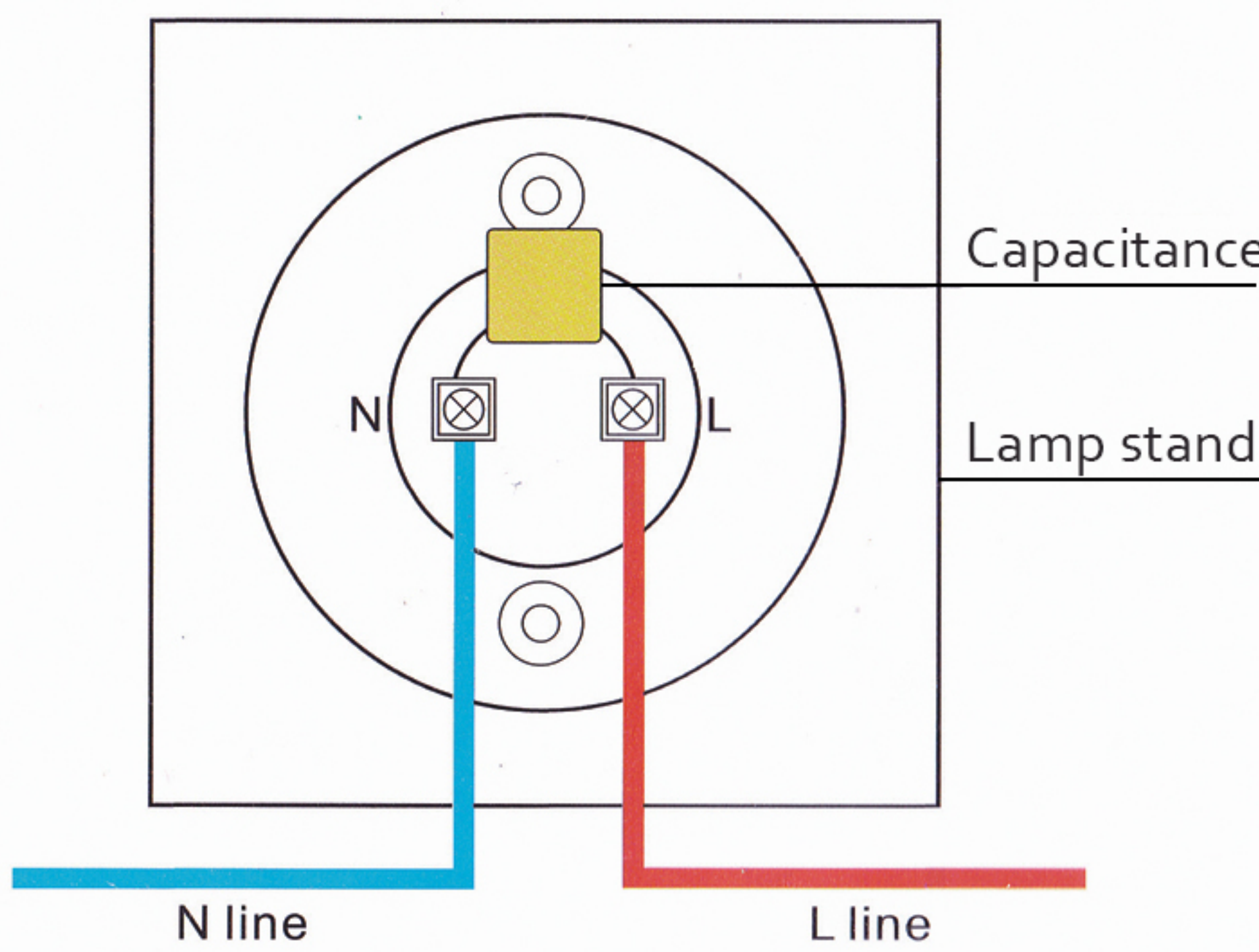
### 3 Product Parameters

Voltage: 110V-240V AC  
Dimension: 86\*86\*36 mm  
Material: Panel: Ultra clear tempered glass panel  
Back shell: fire restriction PC  
Load Power: 3-300W/gang  
(Note: If it is used for LED or energy saving bulb, Power load should be less than 150W/gang)  
RF Frequency: 433MHz  
Working Environment: Temperature: -10~60°C  
Humidity: 10%-95%

### 4 Installation Precautions

- Install the switch with electricity off
- Do not install in damp environment
- Do not exceed the maximum load
- Please follow instructions and properly install

### 5 Capacitance Installation



When the lamp Micro-light or start flashing, Please connect the capacitance between L line and N line. as shown in the drawing.

# Smart Touch Switch

## Product Details