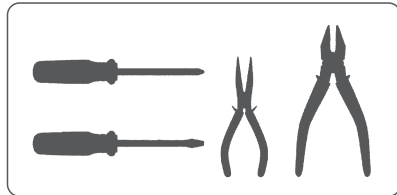


## In-Wall Smart Switch User Manual

Model Number: SS118-01K1  
Power Supply: AC 100~240V  
Rated Frequency: 50/60HZ  
Max. Current: 10A/240V/gang  
Max. Power: 800W/gang  
Wifi: IEEE 802.11 b/g/n  
Wireless Standard: WiFi 2.4GHz  
App Support: iOS/Android



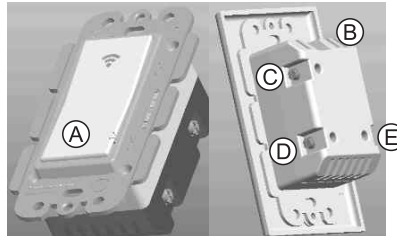
### 1. Tools You Will Need



#### IMPORTANT

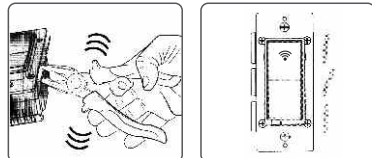
The fixture controlled by the wifi in-wall smart switch must not exceed 960 watts (incandescent); 800w (10A) Resistive or hp motor. The switch is designed only for use with permanently installed fixtures.

#### 2. Switch key and wiring position description.



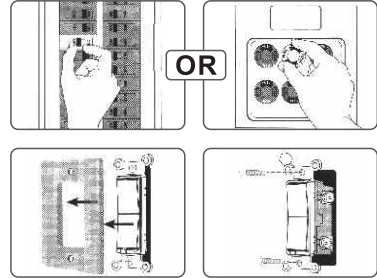
1

- A. Switch button  
1. Press/release to turn the switch on/off  
2. Reset the light switch: Press any key of the device for 20 seconds till light flashes, which indicates a successful reset  
B. Ground wire (green/bare)  
C. Neutral wire (white)  
D. Live wire (black)  
E. Load wire (black)
- Single, dual and triple gang boxes when installing the wifi smart switch in multiple gang boxes, it may be necessary to break off one or both sides of the scored tabs on the front yoke. This does not affect the electrical rating of the smart switch referring to the specifications for details



2

### 3. Switch wiring installation



#### Warning-shock hazard

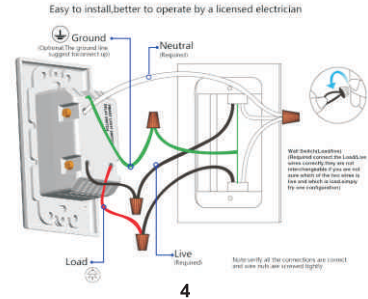
Turn off the power to the branch circuit for the switch and lighting fixture at the service panel. All wiring connections must be made after power down to avoid personal injury and/or damage to the switch. This device is intended for installation in accordance with the national electric code and local regulations in the United States, or Canadian electrical code and local regulations in Canada. If you are unsure or uncomfortable about performing this installation, consult a qualified electrician.

#### Multi-switch wiring

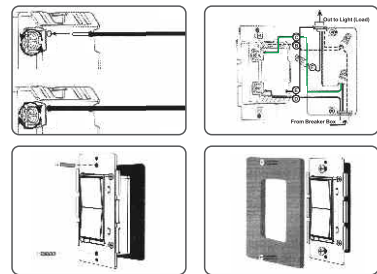
For 3-way installation, please refer to add-on manual single switch wiring before you start: you may wish to change the paddle color to match your wall plate or decor. please proceed to section 5.

1. Shut off the circuit power at circuit breaker or fuse box (IMPORTANT!!! Make sure the power is OFF to switch box before continuing.)  
2. Remove wall plate  
3. Remove the switch mounting screws  
4. Carefully remove the switch from the switch box. DO NOT disconnect the wires.  
5. There are up to five screw terminals on the switch. **These are marked**  
A. Switch button  
1. Press/release to turn the switch on/off  
2. Reset the light switch: Press any key of the device for 20 seconds till light flashes which indicates a successful reset  
B. Ground wire (green/bare)  
C. Neutral wire (white)  
D. Live wire (black)  
E. Load wire (black)

#### Installation instruction



4



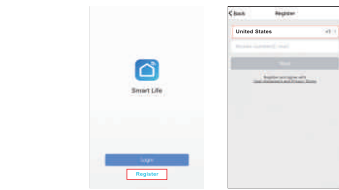
Simplified steps to install the App on your smart device and pair with Amazon Alexa, Google Assistant and IFTTT using Smart Life App on Apple Store/Google Play Store. Compatible with any smart phone or tablet including both Android and IOS systems.

1. Download **Smart Life** from iOS APP Store or Google Play Store. Download or scan the QR code and install the Smart Life App for either iOS or Android. Once downloaded, the app will ask you to register your device. Enter your phone number or email which ever one makes you feel comfortable and select the country you live in. If phone number selected you will receive a text with a registration code. If you choose email you will then create a password.



Attention: There's no Registration code needed if email method chosen.

5



Attention: there're two modes for configurations(Quick Mode/ AP Mode) available for you to choose before adding the device to your App. Quick Mode is recommended.

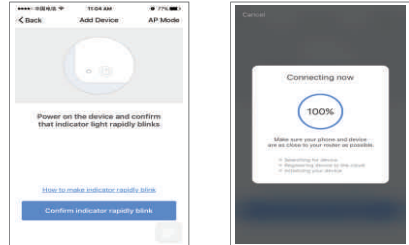
#### Quick Mode Configuration (Common)

1. Make sure quick mode configuration is initiated: the indicator light blinks blue rapidly (twice per second). If it blinks blue slowly (once every 3 seconds), press and hold the power button on your Smart Switch for 20 seconds until the indicator light blinks rapidly.  
2. Tap the icon "+" at the top right corner of choose your device type and enter "Add Device"



6

3. Follow the in-app instructions to connect the Smart Switch to your Wi-Fi network.



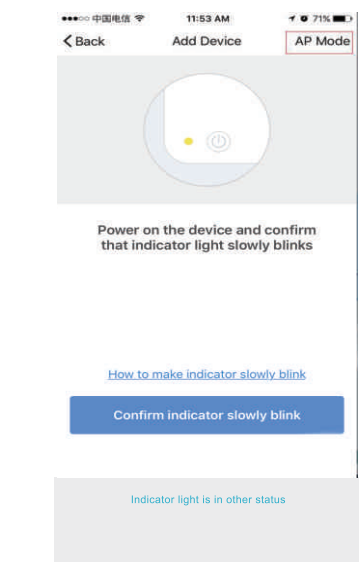
4. Once connected, the App will prompt the connection, and click "Done".  
5. Now you can control the smart switch through **Smart Life** App.  
6. Once the configuration is completed successfully, the indicator light will turn to solid red and the device will be added to the "Device List".

#### AP Mode Configuration

1. Make sure AP mode configuration is initiated: the indicator light blinks blue slowly (once every 3 seconds). If it blinks blue rapidly (twice per second), press and hold the power button on your Smart Switch for 20 seconds until the indicator light blinks slowly.

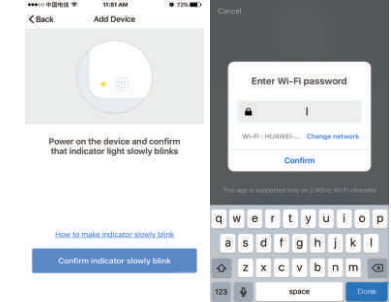
7

2. Tap the icon "+" at the top right corner of "Start your smart life" tab and then click "AP Mode" at the top right corner of "Add Device" tab to add device.



8

3. Follow the in-app instructions to connect the Smart Switch to your Wi-Fi network.



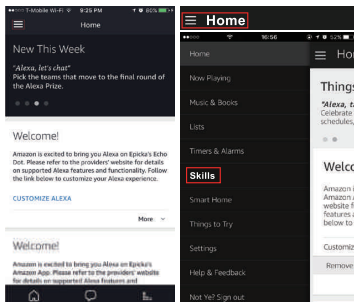
4. Once connected, the App will prompt the connection, and click "Done".  
5. Now you can control your Smart Switch through **Smart Life** APP.  
6. Once the configuration is completed successfully, the indicator light will turn to solid red and the device will be added to the "Device List".

Please note: you can add the Smart Switch to Echo/Google Home following this instructions below, or one on the App (Open Smart Life App, go to "Profile" -> "Integration", tap "Amazon Echo" or "Google Home" and install).

9

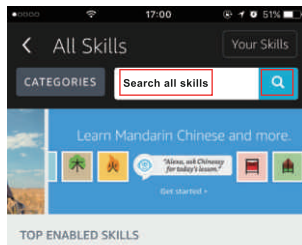
### How to connect your Smart Switch to Amazon Alexa

- Launch **Smart Life** App, sign in your account and make sure your Smart Switch is in your device list.
- Name each device, such as living room light or bedroom light, so that Alexa can easily recognize them.
- Minimize **Smart Life** App, then launch the Alexa App and sign in your Alexa account and make sure you have at least one Alexa voice-controlled device installed like Echo, Echo dot, etc.
- In the upper left corner of Home page, click **Skills** button to show App menu. Then clicks **Skills** in the menu.

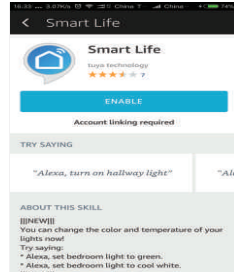


10

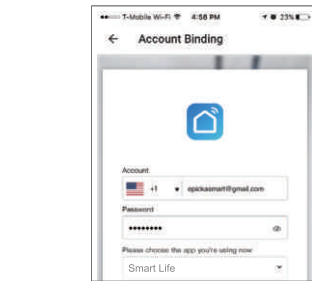
5. Type in "Smart Life" in the search and click the search button.



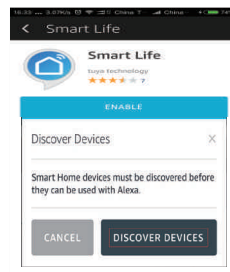
6. Enable Smart Life, then sign in your **Smart Life** account to complete the account linking.



11

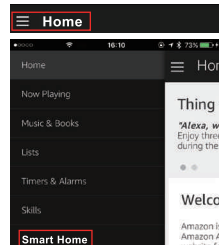


7. After successful account linking, ask Alexa to discover devices. After a 20-second device discovery, Alexa will show all the discovered devices.

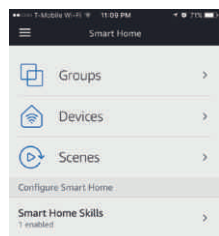


12

8. Back to Menu by clicking **Home** button, and then click **Smart Home** button.



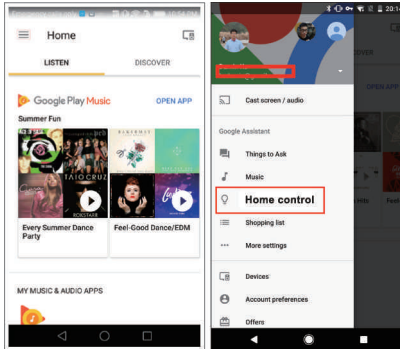
9. In Smart Home page, you can group your devices for different categories. Your **Smart Life** APP has been skilled with Alexa. Now you can control your Smart Switch via Alexa.



13

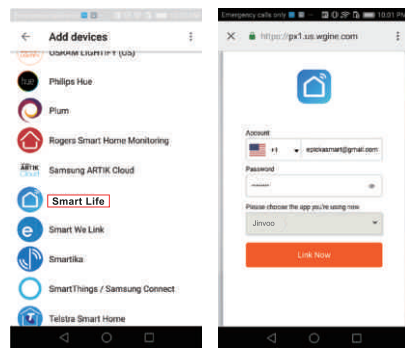
### How to connect you Smart Switch to Google Home

- Launch the Google Home App and make sure Google Home speaker is installed. If not, please follow the Google Home Speaker installation to install it first.
- Once Google Home is installed, in the upper left corner of App Home page, click **Menu** button to show App menu. Then clicks "Home Control" in the menu.



14

3. On "Add devices" page, scroll down to find "Smart Life" and then click it. Sign in Smart Life App with your Smart Life App account and password choose **Smart Life** App in the dropdown menu to complete the account linking.

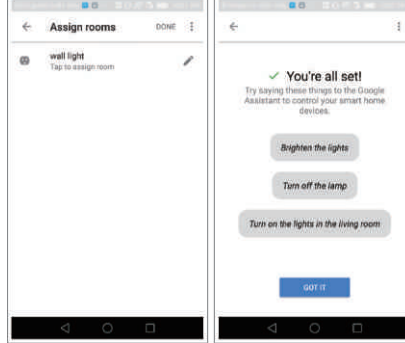


15

4. After successful account linking, in Google Home App you can see all the smart devices from your **Smart Life** App account. You can assign rooms for each device.

5. Now you can use Google Home to control your smart devices, you can say like:

Ok Google, turn on/off wall light  
Ok Google, set bedroom light to red



16

### Troubleshooting and FAQ

#### 1. What devices can I control with the Smart Switch?

You can control lights, in accordance with the Smart Switch specifications.

#### 2. What should I do when I cannot turn Smart Switch on or off?

- Make sure your mobile devices and the Smart Switch are connected to the same Wi-Fi network.
- Make sure the devices connected to the Smart Switch are turned on.

#### 3. What should I do when device configuration process has failed?

You could:

- Check whether the Smart Switch is powered on or not.
- Check whether your mobile device is connected to 2.4GHz Wi-Fi network.
- Check your network connectivity. Make sure the router is working properly:
  - If the router is dual-band router, select 2.4G network and then add Smart Switch.
  - Enable the router's broadcasting function.
  - Configure the encryption method as WPA2-PSK and authorization type as AES, or set both as auto.
  - Wireless mode cannot be 11n only.

17

- Check for Wi-Fi interference or relocate the Smart Switch to another location within the signal range.
- Check whether the router's connected devices reach the amount limit. Please try to turn off some devices' Wi-Fi function and configure Smart Switch again.
- Check if router's wireless MAC filtering function is enabled. Remove the device from filter list and make sure the router is not prohibiting Mini Smart Switch from connection.

- Make sure the password of your Wi-Fi network entered in App is correct when adding Smart Switch.

- Make sure the Smart Switch is ready for App-Config: the indicator light is quickly blinking blue (twice per second) for Quick mode configuration, slow blinking blue (once every 3 seconds) for AP mode configuration.

- Repeat the App-Config process.

- Factory reset the Smart Switch and try to add it again.

#### 4. Can I control device through 2G/3G/4G cellular network?

The Smart Switch and the mobile device are required to be under the same Wi-Fi network when adding the Smart Switch for the first time. After successful device configuration, you can remotely control the device through 2G/3G/4G cellular network.

18

### 5. How can I share my device with family?

Open your App, go to "Profile" -> "Device Sharing" -> "Sent", tap "Add Sharing", now you can share the device with added family members.

### 6. How to reset this device?

Factory reset: After Smart Switch is plugged into a power switch, press and hold (for 20 seconds) the power button for factory reset. till the indicator light blinks blue rapidly. Indicator Lighting pattern:

- Quick blinking blue (twice per second): Quick mode configuration is initiated.
- Slow blinking blue (once every 3 seconds): AP mode configuration is initiated.
- Solid blue: The Smart Switch is connected to the Wi-Fi network.
- Solid red: Power of the Smart Switch is switched on. The indicator light could turn to solid red from any other status (quick/slow blinking blue, solid blue or off) by pressing the power button once and return to the previous status from solid red status (power is switched off) by pressing power button once again.
- Off: The Smart Switch is switched off and no Wi-Fi network.

19